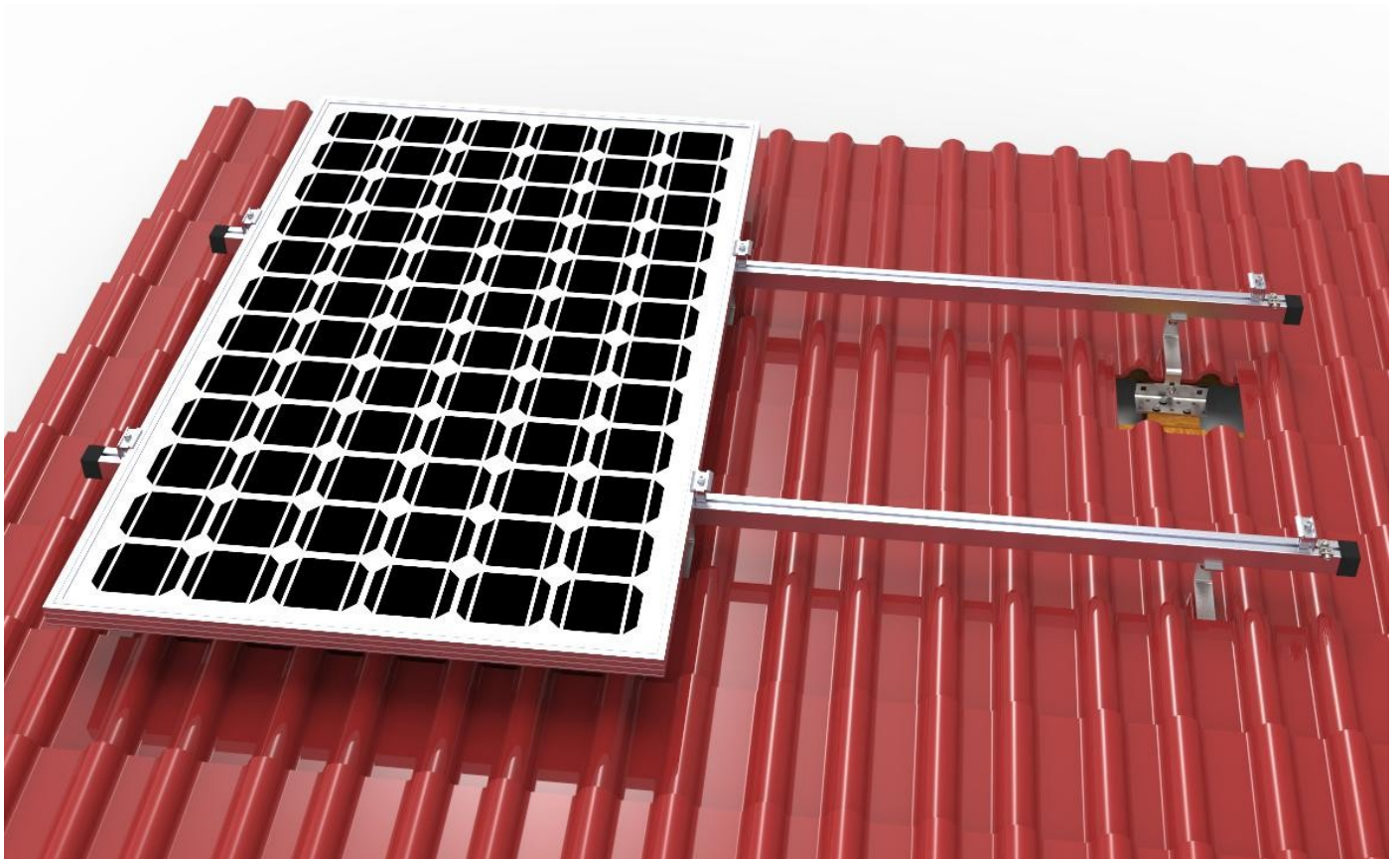


Bedienungsanleitung

Ziegeldach Montageset für 2 Paneele 30-45mm

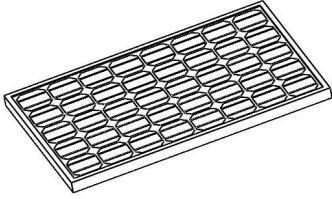
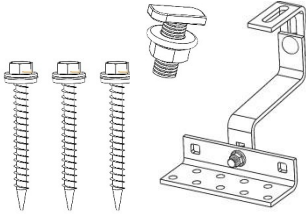

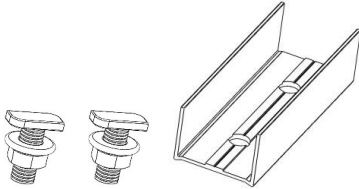
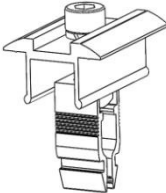
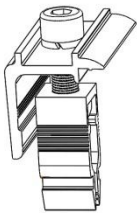
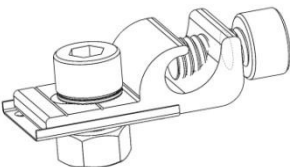
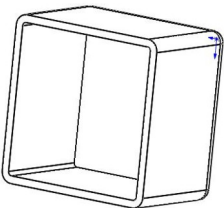


AVOLTIK[®]
PHOTOVOLTAIK

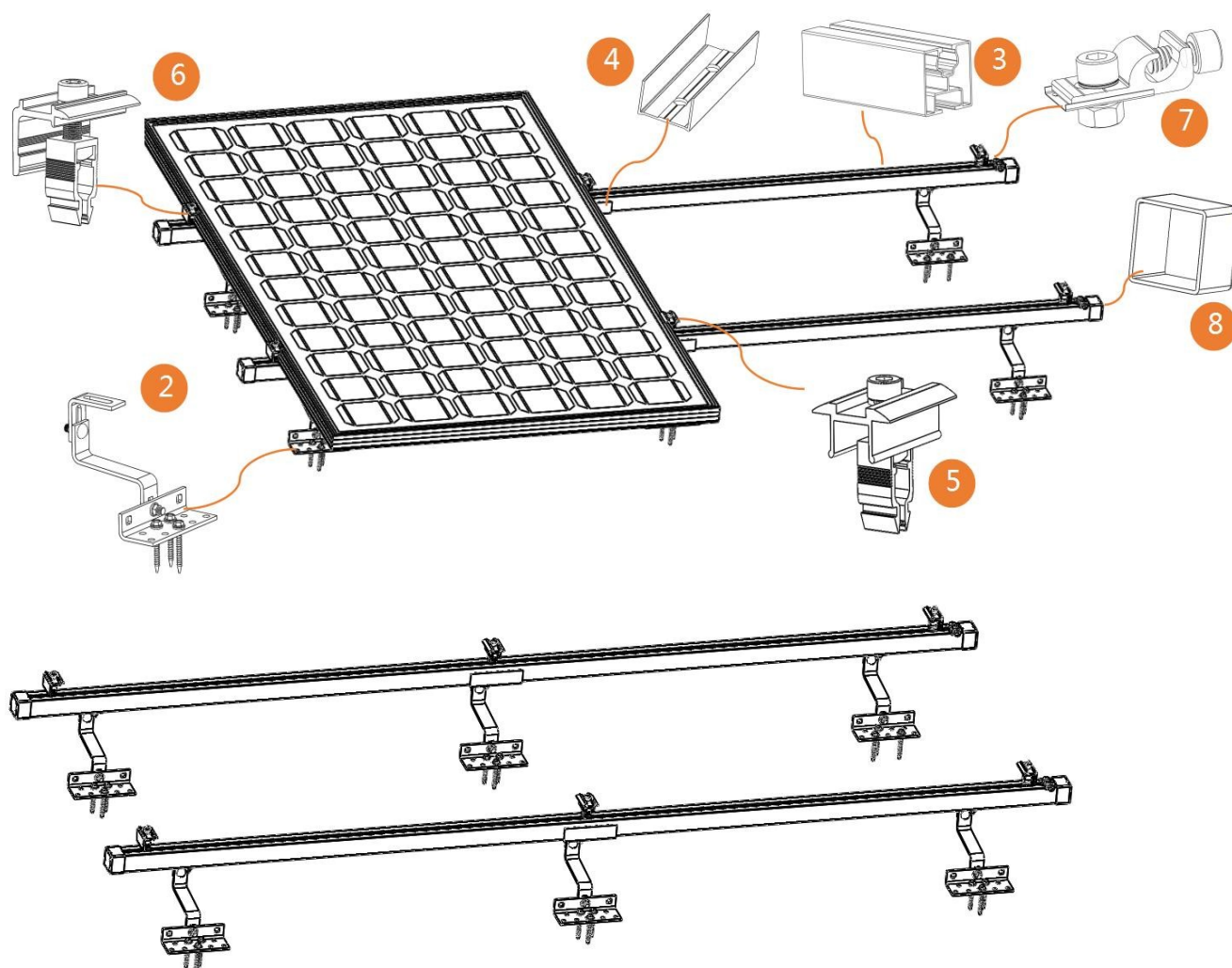
Naassan Com GmbH
Johanniskirchstraße 90
45329 Essen

Bei Fragen erreichen Sie uns unter
E-Mail: kundenservice@avoltik.de
Telefon: 0201-24 33 93 22

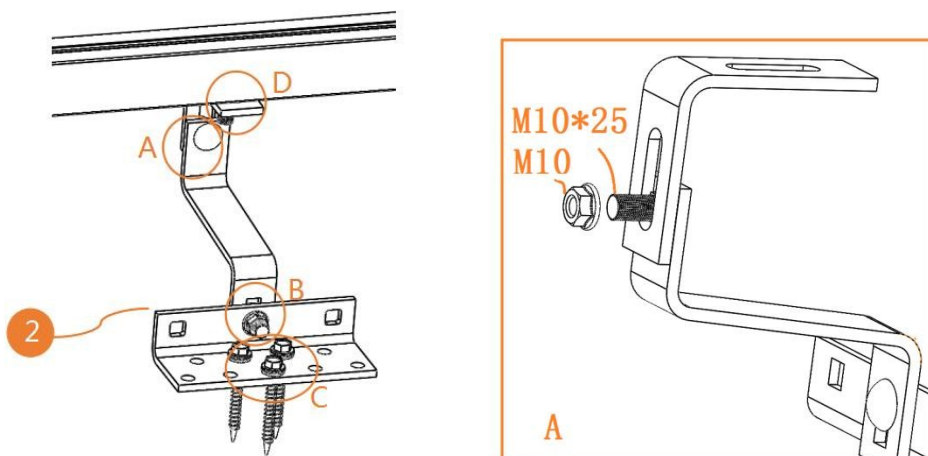
1. Komponenten:

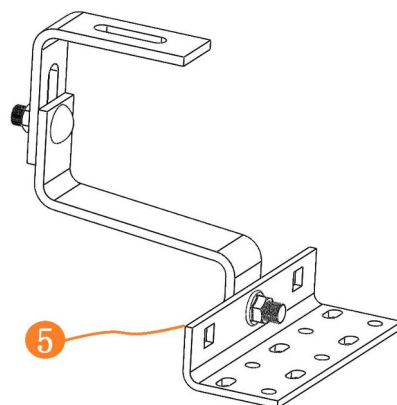
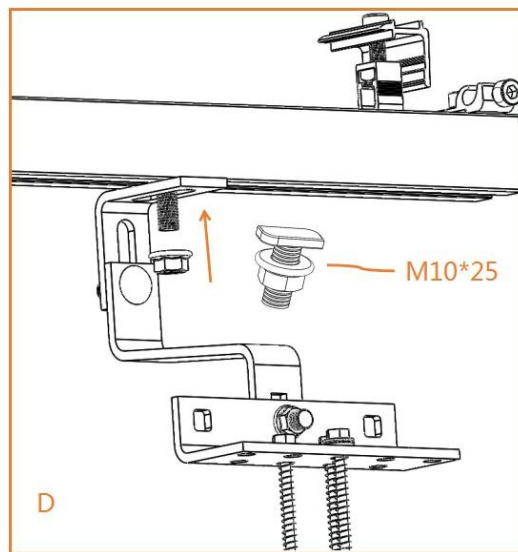
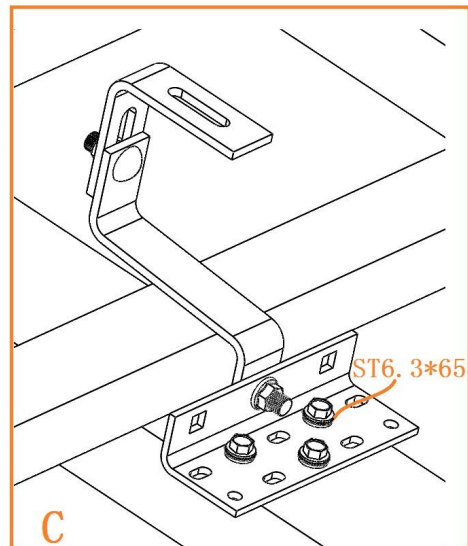
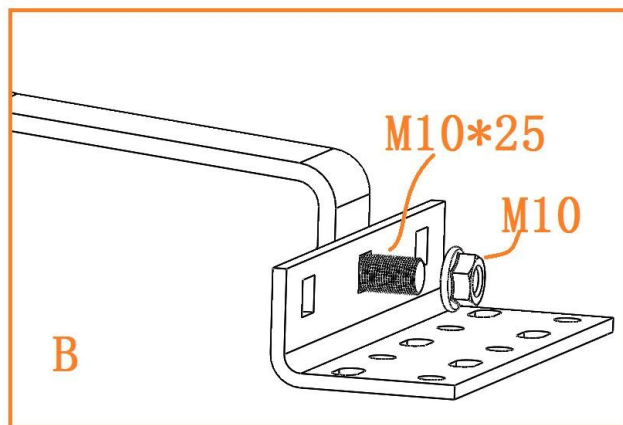
Nr.	Bezeichnung	Bild	Größe(MM)	Menge
1	Solarmodul		/	2
2	ING_TRHWD180		140	8
3	ING-IFR02-1250		1250	4
4	ING-IFR02-SP		120	2
5	ING-FMC-W		50	2
6	ING-FEC-W		50	4
7	ING-LUG		42	2
8	ING-CP-40B		40x40	4

2. Installationsdiagramm

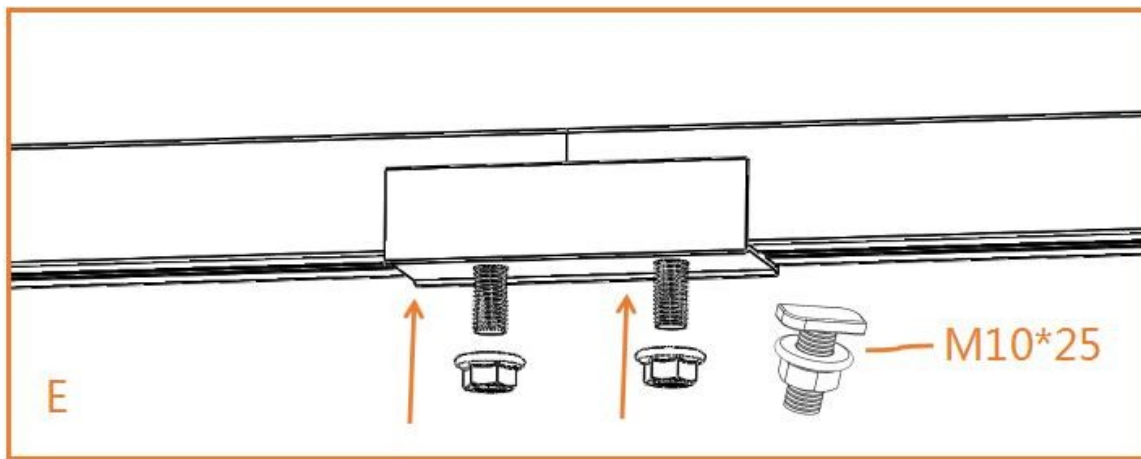
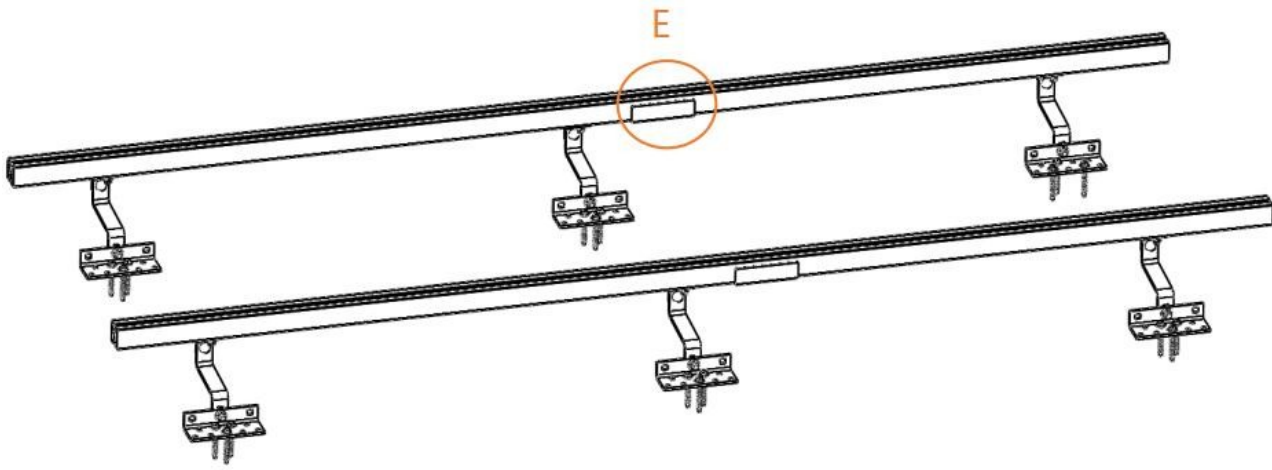


2.1 Haken in die Schiene einsetzen.

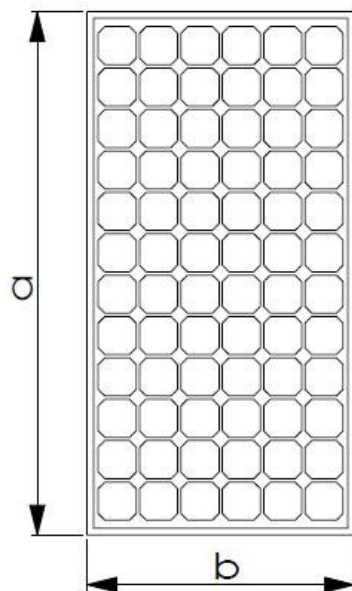


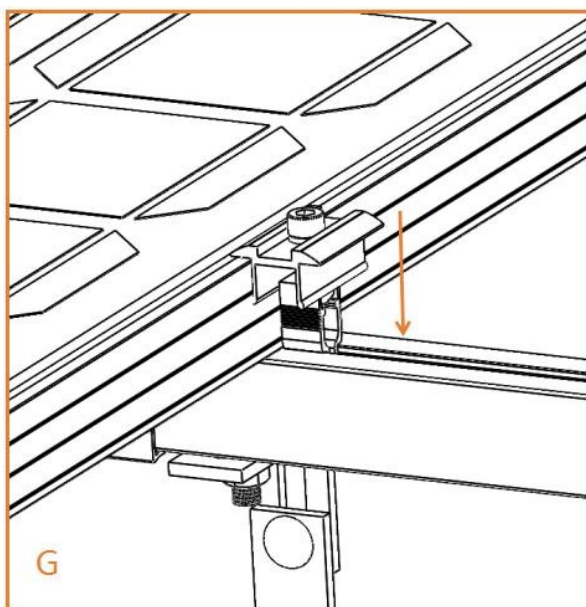
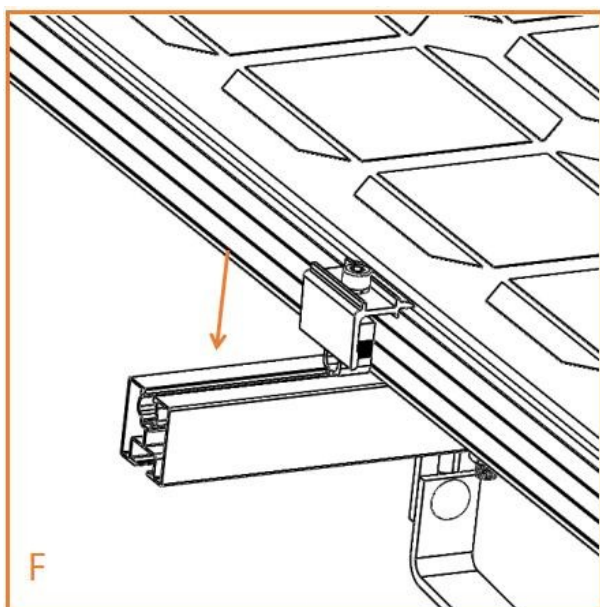
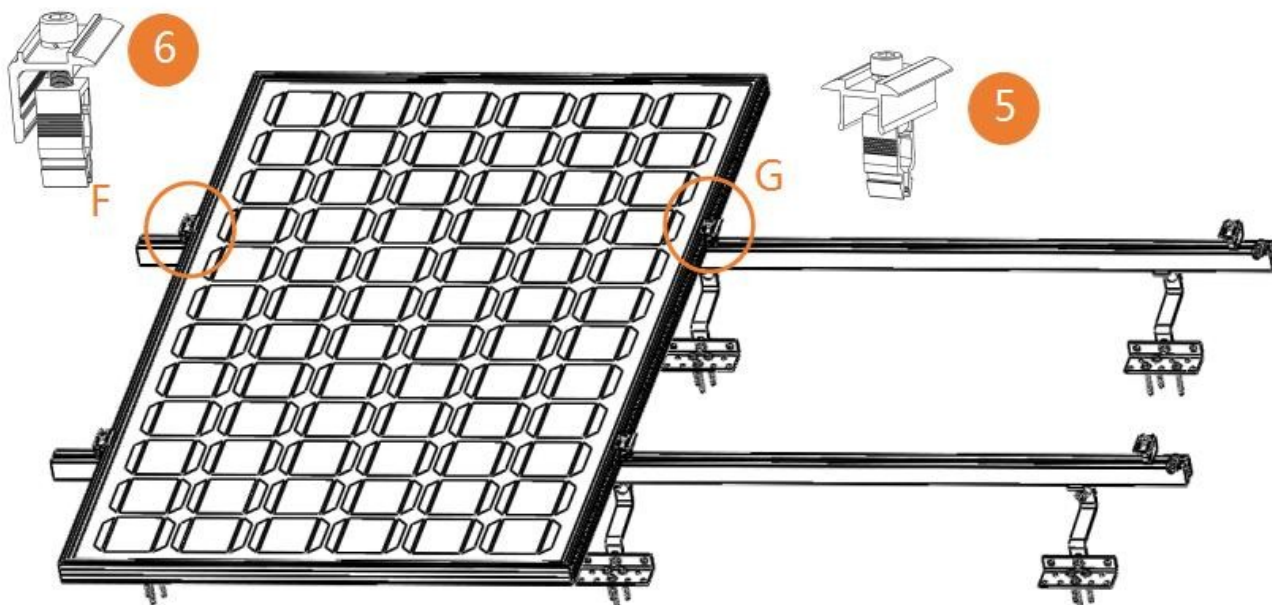


2.2 Verbinder in die Schiene einsetzen.

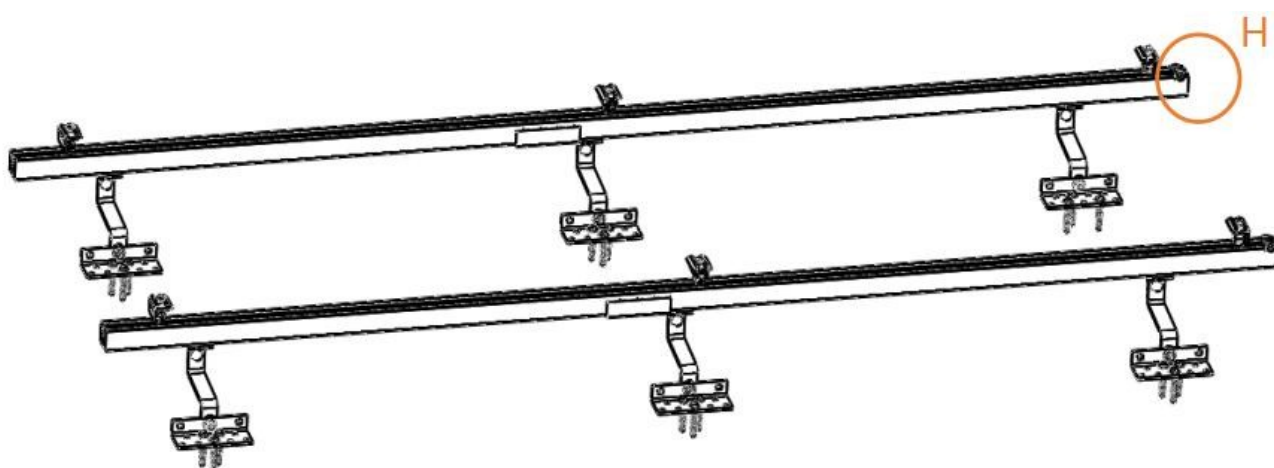


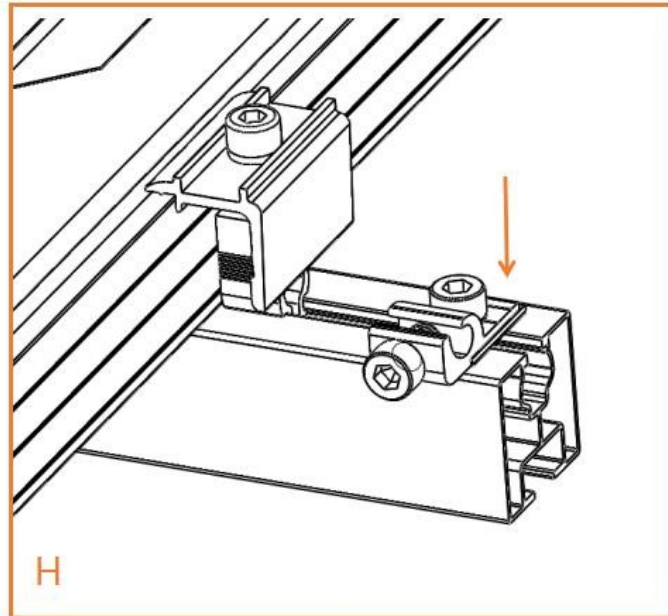
2.3 Solarmodul in die Schiene einsetzen.



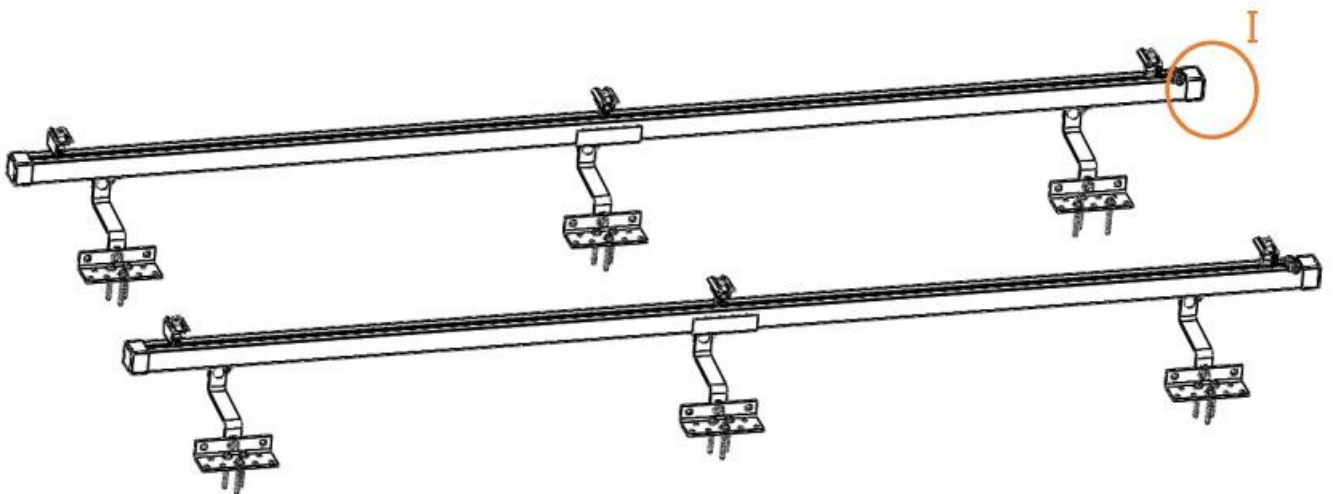


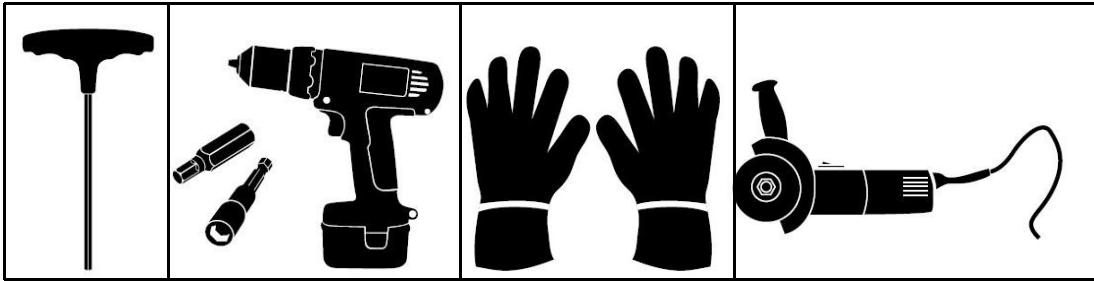
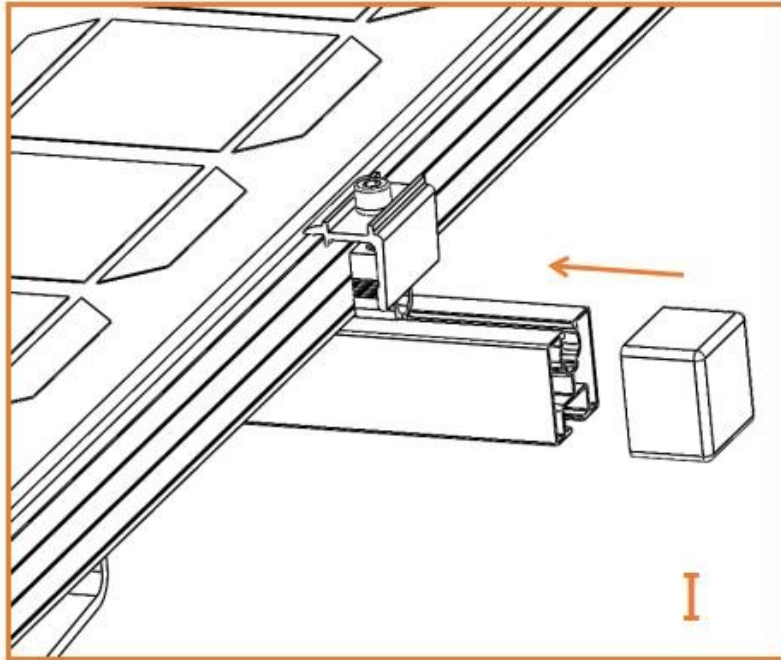
2.4 Erdungsflasche in die Schiene einsetzen.



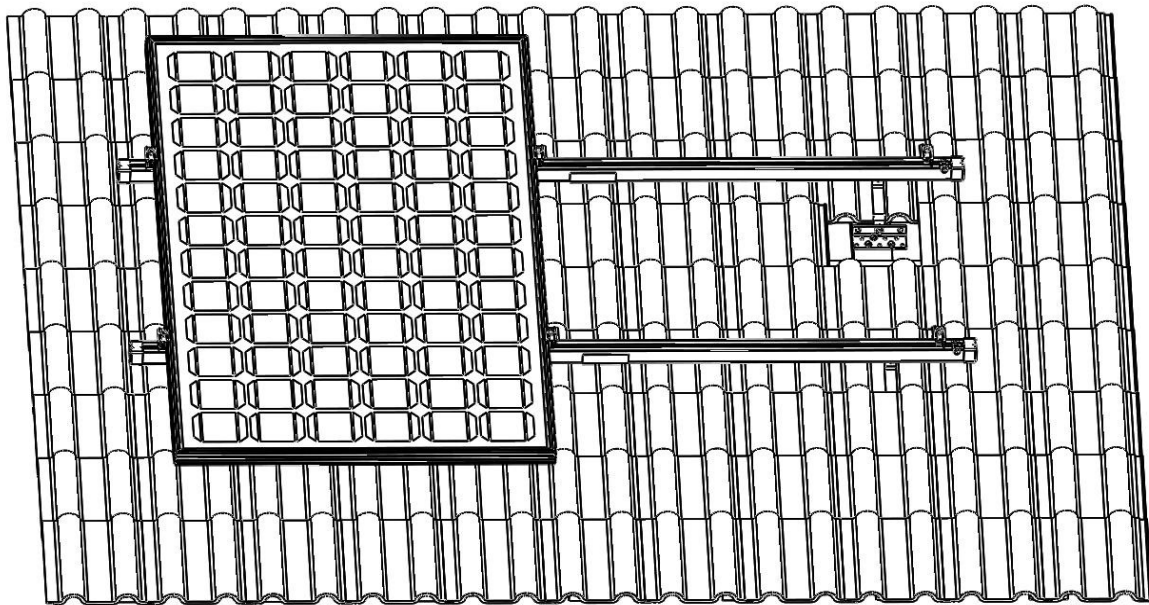
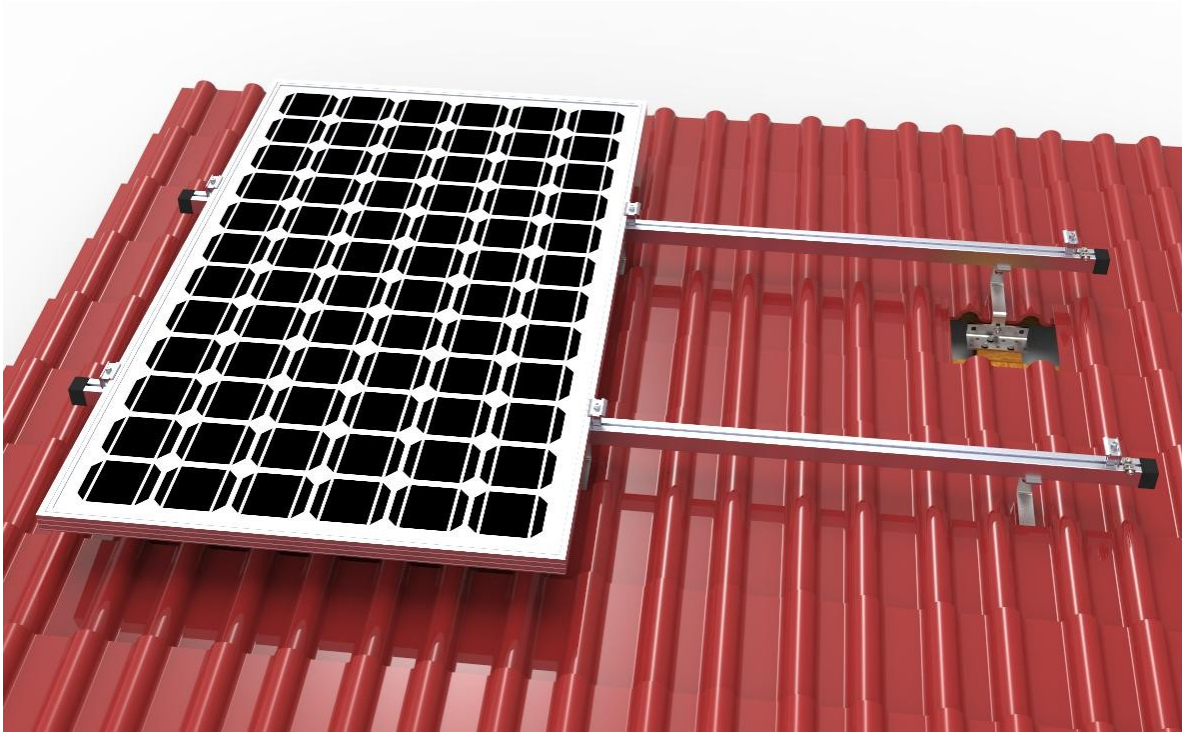


2.5 Schienenkappe in die Schiene einsetzen.





2.6 Installation abgeschlossen.



AVOLTIK[®]
PHOTOVOLTAIK

Naassan Com GmbH
Johanniskirchstraße 90
45329 Essen

Bei Fragen erreichen Sie uns unter
E-Mail: kundenservice@avoltik.de
Telefon: 0201-24 33 93 22